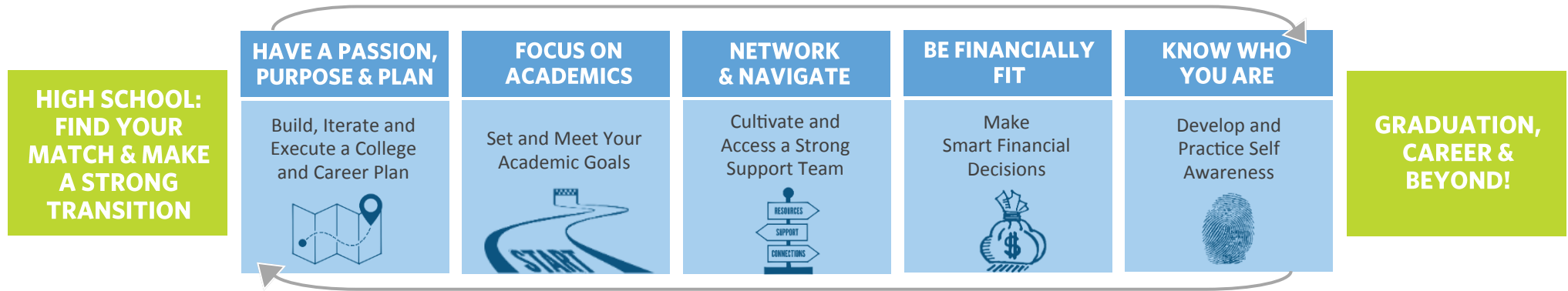


# College Persistence Strategy Framework

## KEYS TO STUDENT SUCCESS



## KEY ADVISOR COACHING PRACTICES

<p><b>HOLD ONGOING 1:1s</b> to check in, collect and analyze data, and coach with purpose.</p> <ul style="list-style-type: none"> <li>Benchmark assessments pre-college and at least 1x/semester</li> <li>Pulse checks/check-ins</li> <li>Follow-up coaching and Interventions</li> <li>Campus visits</li> </ul>	<p><b>COLLECT &amp; ANALYZE DATA</b> to strategize, prioritize and uncover trends across caseloads and colleges.</p> <ul style="list-style-type: none"> <li>Collect transcripts, award letters, etc.</li> <li>Input critical data into the Alumni Database</li> <li>Use reports and dashboards to prioritize next steps</li> </ul>	<p><b>PUSH REGULAR COMMUNICATIONS</b> to your entire caseload to reinforce key messages and push regular reminders.</p> <ul style="list-style-type: none"> <li>Text messages</li> <li>Email</li> <li>Social Media</li> <li>Events and/or campus workshops</li> </ul>	<p><b>ENGAGE STUDENT SUPPORT SYSTEMS</b> to cultivate relationships that will support student persistence.</p> <ul style="list-style-type: none"> <li>Campus staff</li> <li>Families</li> <li>CBOs and other partners</li> <li>Teachers, College Counselors, and other HS staff</li> </ul>
--	--	--	--

## ENABLING CONDITIONS

<p><b>ONGOING, RIGOROUS PROGRESS MONITORING</b></p> <p>Ongoing, systematic monitoring of caseloads to prioritize and strategize and track growth, progress, and trends.</p>	<p><b>COUNSELING &amp; ADVISING FEEDBACK LOOP</b></p> <p>Structured and purposeful handoff from counselors to advisors along with regular and open communication and data sharing.</p>	<p><b>STRONG RELATIONSHIPS WITH POST-SECONDARY INSTITUTIONS</b></p> <p>Development of purposeful and intentional relationships with institutions (Including KIPP College Partners) for data sharing and mutual support.</p>	<p><b>CONTINUOUS ADVISOR COMPETENCY DEVELOPMENT</b></p> <p>Advisor competency development; professional development; on-going review; goal-setting and evaluation.</p>
---	--	---	--