

KIPP Academy Nashville

123 Douglas Ave, Nashville, TN 37207 • 615-226-4484 opt 1 • kippnashville.org/schools-programs/kipp-academy-nashville/

School Leader(s): Hada Flores

Year Founded: 2005

Grades Served: 5 - 8

Student Enrollment: 364

Gender: 49% Male, 51% Female

Number of Teachers: 21

QUESTION 1 WHO ARE OUR STUDENTS?

CEP Eligible

Eligible for Free/
Reduced-Price Meals

57%

African American

1%

Asian

11%

Receive Special
Education Services

38%

Hispanic or Latino

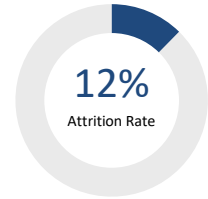
<1%

Other

3%

White

QUESTION 2 ARE OUR STUDENTS STAYING WITH US?



QUESTION 3 ARE OUR STUDENTS PROGRESSING AND ACHIEVING ACADEMICALLY?

ARE WE MAKING ENOUGH GROWTH TO REACH GRADE AND COLLEGE-READY LEVELS?

Measures of Academic Progress (MAP) 2016-17

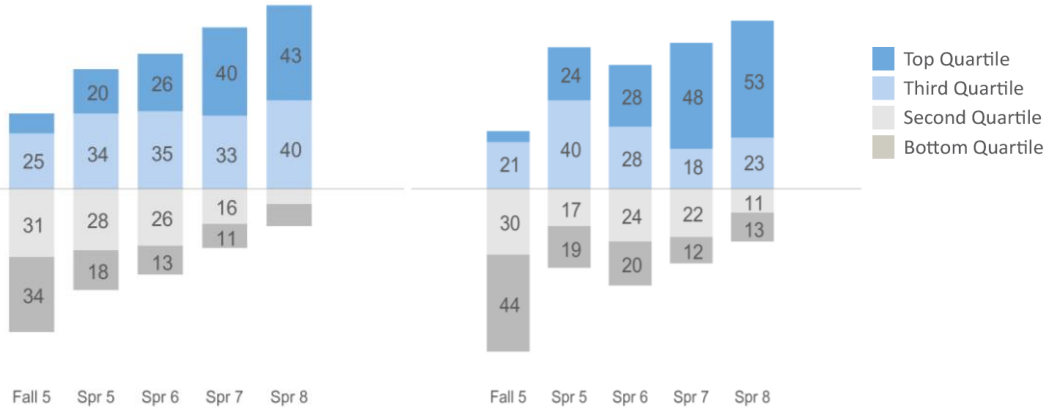
Reading

Math

Percent of students making
1+ years of academic
progress in:

Reading: 71%

Mathematics: 77%



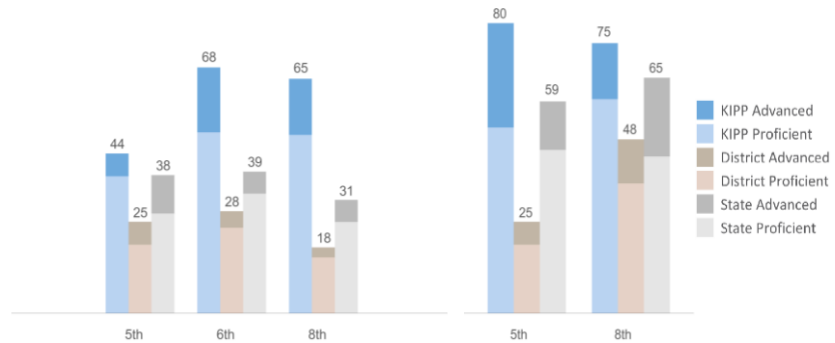
HOW ARE WE PERFORMING RELATIVE TO OUR LOCAL COMMUNITY?

Tennessee Comprehensive Assessment Program (TCAP) 2016-17

Reading

Math

Science



The following pages were created to share KIPP Report Card data in a format that is compliant with the Americans with Disabilities Act.

School Name	KIPP Academy Nashville
Address	123 Douglas Ave, Nashville, TN 37207
Phone Number	615-226-4484 opt 1
Website	www.kipnashville.org/schools-programs/kipp-academy-nashville/
School Leader(s)	Hada Flores
Year Founded	2005
Grades Served	5 - 8
Student Enrollment	364
Gender	49% Male, 51% Female
Number of Teachers	21

Question 1: Who are our students?

Eligible for Free/Reduced Price Meals	CEP Eligible
Receive Special Education Services	11%
African American	57%
Hispanic or Latino	38%
Asian	1%
Other	<1%
White	3%

Question 2: Are our students staying with us?

Attrition Rate	12%
-----------------------	-----

Question 3: Are our students progressing and achieving academically?

Percent of students making 1+ years of academic progress as measured by 2016-17 Measures of Academic Progress (MAP) exam

Reading	71%
Mathematics	77%

Data Footnotes

Question 3 (continued): Are we making enough growth to reach grade and college-ready levels?

Annual 2016-17 Measures of Academic Progress (MAP) Exam Performance - Percentiles

Season	Test Name	Grade	Bottom %	3rd %	2nd %	Top %
FALL	Mathematics	5	44	30	21	5
SPRING	Mathematics	5	19	17	40	24
SPRING	Mathematics	6	20	24	28	28
SPRING	Mathematics	7	12	22	18	48
SPRING	Mathematics	8	13	11	23	53
FALL	Reading	5	34	31	25	9
SPRING	Reading	5	18	28	34	20
SPRING	Reading	6	13	26	35	26
SPRING	Reading	7	11	16	33	40
SPRING	Reading	8	10	7	40	43

Question 3 (continued): How are we performing relative to our local community?

Percent of Students Meeting or Exceeding Grade Level Proficiency as Measured by State Test Score					
Tennessee Comprehensive Assessment Program (TCAP) 2016-17					
Test	Grade	Proficiency	School	District	State
Mathematics	5	Exceeds	6.31	6.32	10.60
Mathematics	5	Met	37.84	18.97	27.56
Mathematics	6	Exceeds	17.92	4.60	6.06
Mathematics	6	Met	50.00	23.61	33.06
Mathematics	8	Exceeds	15.49	2.76	6.10
Mathematics	8	Met	49.30	15.44	25.22
Science	5	Exceeds	28.83	6.32	13.40
Science	5	Met	51.35	18.97	45.14
Science	8	Exceeds	15.49	12.20	21.78
Science	8	Met	59.15	35.85	43.31