

KIPP Memphis Collegiate Schools

MEMPHIS, TN • Executive Director: Kendra Ferguson • 7 Schools • Grades Served: K-12 • Total Enrollment: 2,878 • Est. 2002

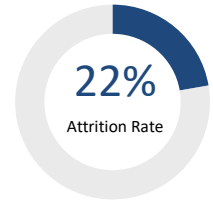
School Name: Year Est., Grades Served, School Leader

KIPP Memphis Academy Elementary: 2013, K-4, Jenna Molinski
 KIPP Memphis Academy Middle: 2012, 5-8, Andrea Criollo
 KIPP Memphis Collegiate Elementary: 2012, K-4, Jeffrey Jennifer
 KIPP Memphis Collegiate High: 2011, 9-12, Sharifa Edwards
 KIPP Memphis Collegiate Middle: 2002, 5-8, Timothy Pruitt
 KIPP Memphis Preparatory Elementary: 2015, K-3, Grace Bailey
 KIPP Memphis Preparatory Middle: 2013, 5-8, Jeremiah Frazier

QUESTION 1 WHO ARE OUR STUDENTS?

CEP Eligible	10%
Eligible for Free/Reduced Price Meals	Receive Special Education Services
95%	3%
African American	Hispanic or Latino
<1%	<1%
Asian	Other
	2%
	White

QUESTION 2 ARE OUR STUDENTS STAYING WITH US?



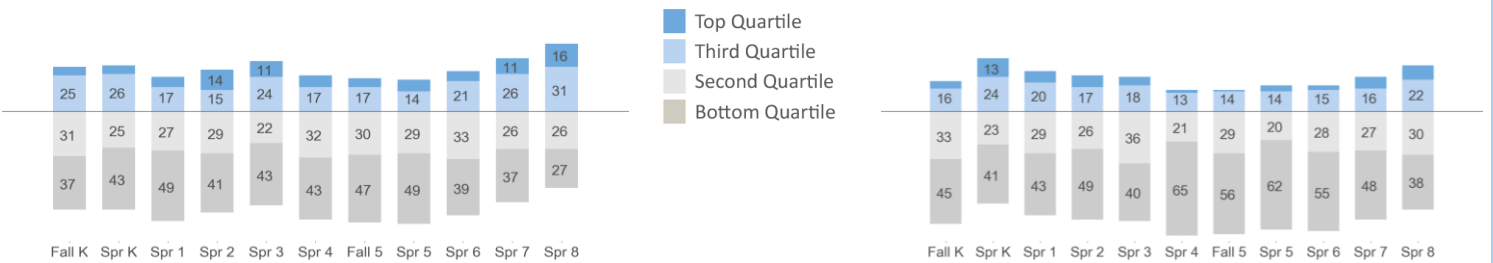
QUESTION 3 ARE OUR STUDENTS PROGRESSING AND ACHIEVING ACADEMICALLY?

ARE WE MAKING ENOUGH GROWTH TO REACH GRADE AND COLLEGE-READY LEVELS?

Measures of Academic Progress (MAP) 2016-17

Reading

Math

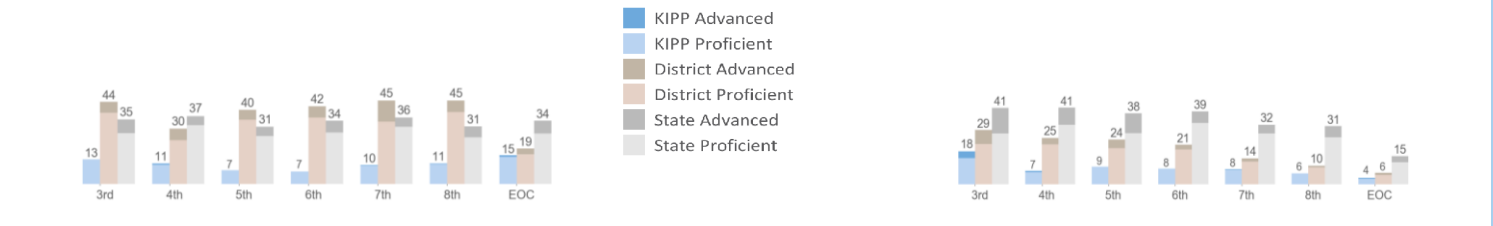


HOW ARE WE PERFORMING RELATIVE TO OUR LOCAL COMMUNITY?

Tennessee Comprehensive Assessment Program (TCAP) Results 2016-17

Reading

Math



KIPP HIGH SCHOOL RESULTS FOR GRADUATING SENIORS

17	100%	80%	8%
Average ACT	ACT Participation Rate	Took at Least 1 AP	Scored 3 or Above on at Least 1 AP

QUESTION 4 ARE OUR ALUMNI CLIMBING THE MOUNTAIN TO AND THROUGH COLLEGE?

95%	78%
High School Graduation Rate	College Matriculation Rate

*Figures are for students who completed the 8th grade at a KIPP middle school 5+ years ago and/or graduated from a KIPP high school.

QUESTION 5 ARE WE BUILDING A SUSTAINABLE PEOPLE MODEL?

62%	194
Teachers Retained within KIPP (56% Retained in Their Position)	Number of Teachers

The following pages were created to share KIPP Report Card data in a format that is compliant with the Americans with Disabilities Act.

Region Name KIPP Memphis Collegiate Schools

Location	MEMPHIS, TN
Executive Director	Kendra Ferguson
Number of Schools	7
Regional Grades Served	K-12
Total Enrollment	2878
Region Established	2002

School Name	Year Est.	Grades Served	School Leader
KIPP Memphis Academy Elementary	2013	K-4	Jenna Molinski
KIPP Memphis Academy Middle	2012	5-8	Andrea Criollo
KIPP Memphis Collegiate Elementary	2012	K-4	Jeffrey Jennifer
KIPP Memphis Collegiate High	2011	9-12	Sharifa Edwards
KIPP Memphis Collegiate Middle	2002	5-8	Timothy Pruitt
KIPP Memphis Preparatory Elementary	2015	K-3	Grace Bailey
KIPP Memphis Preparatory Middle	2013	5-8	Jeremiah Frazier

Question 1: Who are our students?

Eligible for Free/Reduced Price Meals	CEP Eligible
Receive Special Education Services	10%
African American	95%
Hispanic or Latino	3%
Asian	<1%
Other	<1%
White	2%

Question 2: Are our students staying with us?

Attrition Rate	22%
----------------	-----

Question 3: Are our students progressing and achieving academically?

KIPP HIGH SCHOOL RESULTS FOR GRADUATING SENIORS*

Average ACT	17
ACT Participation Rate	100%
Took at Least 1 AP	80%
Scored 3 or Above on at Least 1 AP	8%

Question 4: Are our alumni climbing the mountain to and through college?

High School Graduation Rate	95%
College Matriculation Rate	78%

* Figures are for students who completed the 8th grade at a KIPP middle school 5+ years ago and/or graduated from a KIPP high school.

Question 5: Are we building a sustainable people model?

Teachers Retained within KIPP	62%
Teachers Retained in Their Position	56%
Number of Teachers	194

Data Footnotes

Per Pupil Funding for KIPP Memphis Collegiate Schools for fiscal year 2018 is \$9,712.

Question 3 (continued): Are we making enough growth to reach grade and college-ready levels?

Annual 2016-17 Measures of Academic Progress (MAP) Exam Performance - Percentiles						
Season	Test Name	Grade	Bottom %	2nd %	3rd %	Top %
FALL	Mathematics	0	45	33	16	5
SPRING	Mathematics	0	41	23	24	13
SPRING	Mathematics	1	43	29	20	8
SPRING	Mathematics	2	49	26	17	8
SPRING	Mathematics	3	40	36	18	6
SPRING	Mathematics	4	65	21	13	2
FALL	Mathematics	5	56	29	14	1
SPRING	Mathematics	5	62	20	14	4
SPRING	Mathematics	6	55	28	15	3
SPRING	Mathematics	7	48	27	16	8
SPRING	Mathematics	8	38	30	22	10
FALL	Reading	0	37	31	25	6
SPRING	Reading	0	43	25	26	6
SPRING	Reading	1	49	27	17	7
SPRING	Reading	2	41	29	15	14
SPRING	Reading	3	43	22	24	11
SPRING	Reading	4	43	32	17	8
FALL	Reading	5	47	30	17	6
SPRING	Reading	5	49	29	14	8
SPRING	Reading	6	39	33	21	7
SPRING	Reading	7	37	26	26	11
SPRING	Reading	8	27	26	31	16

Question 3 (continued): How are we performing relative to our local community?

Percent of Students Meeting or Exceeding Grade Level Proficiency as Measured by State Test Score					
Test	Grade	Proficiency	Region	District	State
Mathematics	3	Exceeds	3.54	7.50	13.64
Mathematics	3	Met	14.14	21.67	27.40
Reading/English Language Arts	3	Exceeds	0.00	5.80	7.30
Reading/English Language Arts	3	Met	13.33	38.30	27.40
Mathematics	4	Exceeds	0.73	3.50	9.20
Mathematics	4	Met	6.57	21.50	32.00
Reading/English Language Arts	4	Exceeds	0.74	6.30	4.90
Reading/English Language Arts	4	Met	10.37	23.50	31.60
Mathematics	5	Exceeds	0.00	4.70	10.60
Mathematics	5	Met	9.44	19.40	27.56
Reading/English Language Arts	5	Exceeds	0.00	5.30	5.00
Reading/English Language Arts	5	Met	7.39	34.50	25.80
Mathematics	6	Exceeds	0.00	2.60	6.06
Mathematics	6	Met	8.39	18.70	33.06
Reading/English Language Arts	6	Exceeds	0.00	6.00	6.30
Reading/English Language Arts	6	Met	6.77	35.80	27.70
Mathematics	7	Exceeds	0.30	1.70	4.60
Mathematics	7	Met	7.78	12.30	27.30
Reading/English Language Arts	7	Exceeds	0.31	11.30	5.00
Reading/English Language Arts	7	Met	9.91	33.50	30.80
Mathematics	8	Exceeds	0.00	0.85	6.10
Mathematics	8	Met	5.88	9.22	25.22
Reading/English Language Arts	8	Exceeds	0.32	6.20	5.80
Reading/English Language Arts	8	Met	10.68	38.60	25.20
Mathematics	99	Exceeds	0.50	1.20	3.23
Mathematics	99	Met	3.00	5.06	11.94
Reading/English Language Arts	99	Exceeds	0.83	3.04	6.87
Reading/English Language Arts	99	Met	14.64	16.05	27.20