

KIPP Summit Academy

2005 Via Barrett, San Lorenzo, CA 94580 • 510-258-0106 • kippbayarea.org/schools/summit

School Leader(s): Salomé Portugal

Year Founded: 2003

Grades Served: 5 - 8

Student Enrollment: 416

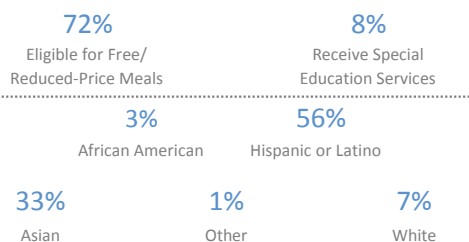
Gender: 47% Male 53% Female

Number of Teachers: 21

Per Pupil Funding: \$8,656

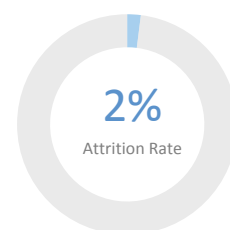
QUESTION 1

ARE WE **SERVING** THE **CHILDREN** WHO NEED US?



QUESTION 2

ARE OUR **STUDENTS** **STAYING** WITH US?



QUESTION 3

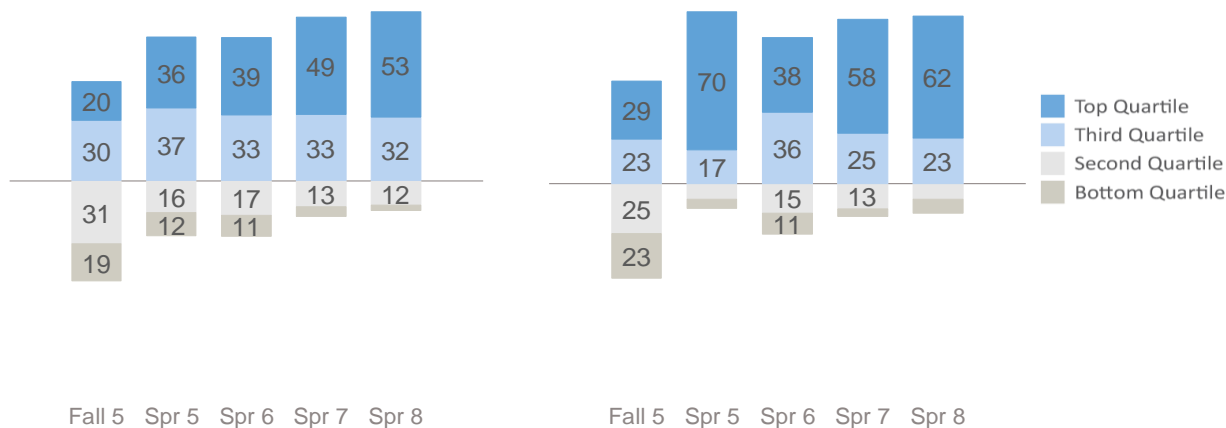
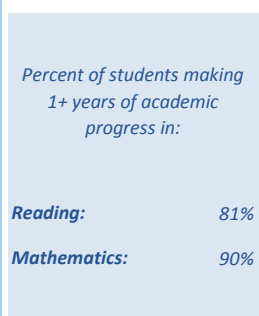
ARE OUR **STUDENTS** PROGRESSING AND **ACHIEVING** ACADEMICALLY?

ARE WE MAKING ENOUGH GROWTH TO REACH GRADE AND COLLEGE-READY LEVELS?

Measures of Academic Progress (MAP) 2014-15

Reading

Math



HOW ARE WE PERFORMING RELATIVE TO OUR LOCAL COMMUNITY?

Smarter Balanced Assessment Consortium (SBAC) 2014-15

Reading

Math

